

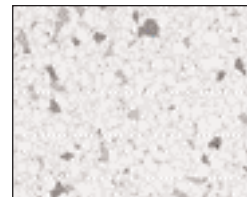
Statguard® ESD Pure Vinyl Tile

Description

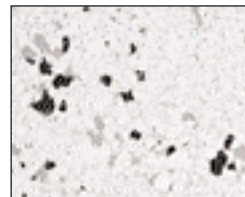
Statguard® ESD Pure Vinyl Tile creates an ESD protected floor that is resistant to chemicals and is guaranteed to maintain its properties for the life of the floor. Installed using conductive adhesive, copper foil strips and properly grounded electrostatic charges are removed to ground.

Statguard® ESD Pure Vinyl Tile meets the recommended range for ESD Floor of Table 1 of ANSI/ESD S20.20 and is designed to be low tribocharging (antistatic), and conductive (able to provide a path-to-ground to remove electrostatic charges). "ESD protective flooring, used with approved footwear, may be used as an alternative to the wrist strap system for standing operations." (ANSI/ESD S20.20 section 6.2.2.2)

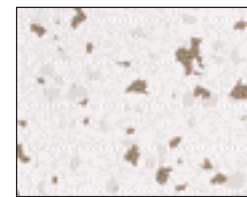
ITEM	DESCRIPTION
81500	White Gray, 12" x 12", 45/case
81501	White Black, 12" x 12", 45/case
81502	White Beige, 12" x 12", 45/case
81503	White Burgandy, 12" x 12", 45/case
81504	White Blue, 12" x 12", 45/case
81505	White Green, 12" x 12", 45/case
81506	Slate Blue, 12" x 12", 45/case
81508	Grey, 12" x 12", 45/case
81509	Beige, 12" x 12", 45/case
81510	White Grey, 24" x 24", 10/case
81511	White Blue, 24" x 24", 10/case
81512	White Grey, 36" x 36", each
81513	White Blue, 36" x 36", each



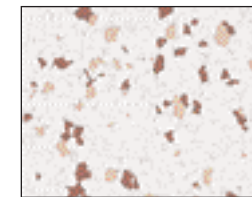
White Gray
Items 81500, 81510,
and 81512



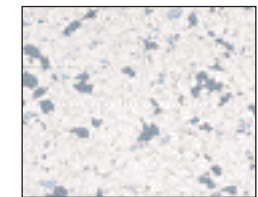
White Black
Item 81501



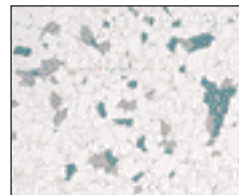
White Beige
Item 81502



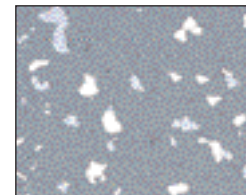
White Burgandy
Item 81503



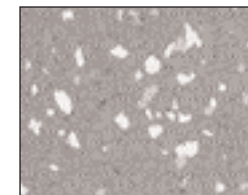
White Blue
Items 81504, 81511,
and 81513



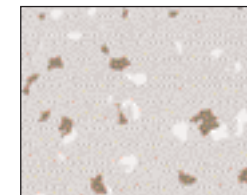
White Green
Item 81505



Slate Blue
Item 81506



Grey
Item 81508



Beige
Item 81509



NOTE: Statguard® ESD Vinyl Tile requires Special Installation using Full Spread Conductive Epoxy Adhesive and Copper Foil Strips

Statguard® ESD Pure Vinyl Tile

STATGUARD FLOORING

STATGUARD FLOORING
432 NORTHBORO RD CENTRAL • MARLBORO, MA 01752-3170
PHONE (508) 481-6849 • FAX (508) 480-0257
StatguardFlooring.com

DRAWING NUMBER
TD-81500

DATE
January
2008

Statguard Flooring

ESD Pure Vinyl Tile - Specifications

Test	Parameters	Results
Electricals		
Electrical Resistance Surface to ground ohms	ESD S7.1	2.5 x 10E4 - 1.0 x 10E6
Static Generation		< 25 volts
Floor Materials and Footwear Resistance Measurement	ESD STM 97.1	
Floor Materials and Footwear Voltage Measurement Electro Static Propensity	ESD STM 97.2	
Static Decay	FED TM 101C, Method 4046 @ 15% RH, 5000 V to 0 V	0.03 Seconds
Fire Behavior		
Flame Spread Index Smoke Development Critical radiant flux	ASTM E162 / ASTM E84 ASTM E84 ASTME648/NFPA 253	Meets Class 1 Requirement Meets Class 1 Requirement > 1.1 w/cm2
Mechanical Features		
Physical Specifications	Meets ASTM F1066-99 Meets US Federal Specifications SS-T-312B	
Hardness	ASTM D 2240	55 + 5 Shore D
Flexibility	CSA 126.2 100 mm mandrel @ 250 C	Does not break
Abrasion Resistance Taber H22 wheel, 70 rpm	ASTM D3389	0.445 grams wt of tile per 1000 cycles
Static Load 125 pound, 0.25 in. diameter indenter foot, 24 hours Residual indentation	ASTM F970 - Modified ASTM F970 - Modified 100 mm mandrel @ 250 C	2500 PSI point load 3% of tile thickness
700 pound, 1.125 in. diameter indenter foot, 24 hours Residual indentation		700 PSI point load 1% of tile thickness

Product Specifications / Construction Factors:

Sizes	12", 24", 24.2", 36" square
Gauge	1/8" (3.17 mm)
Colors	10
Grounding	Required - use 1/2" wide copper foil type
Adhesives	One part acrylic and two part epoxy
Limited Wear Warranty	10 year product & life time electrical